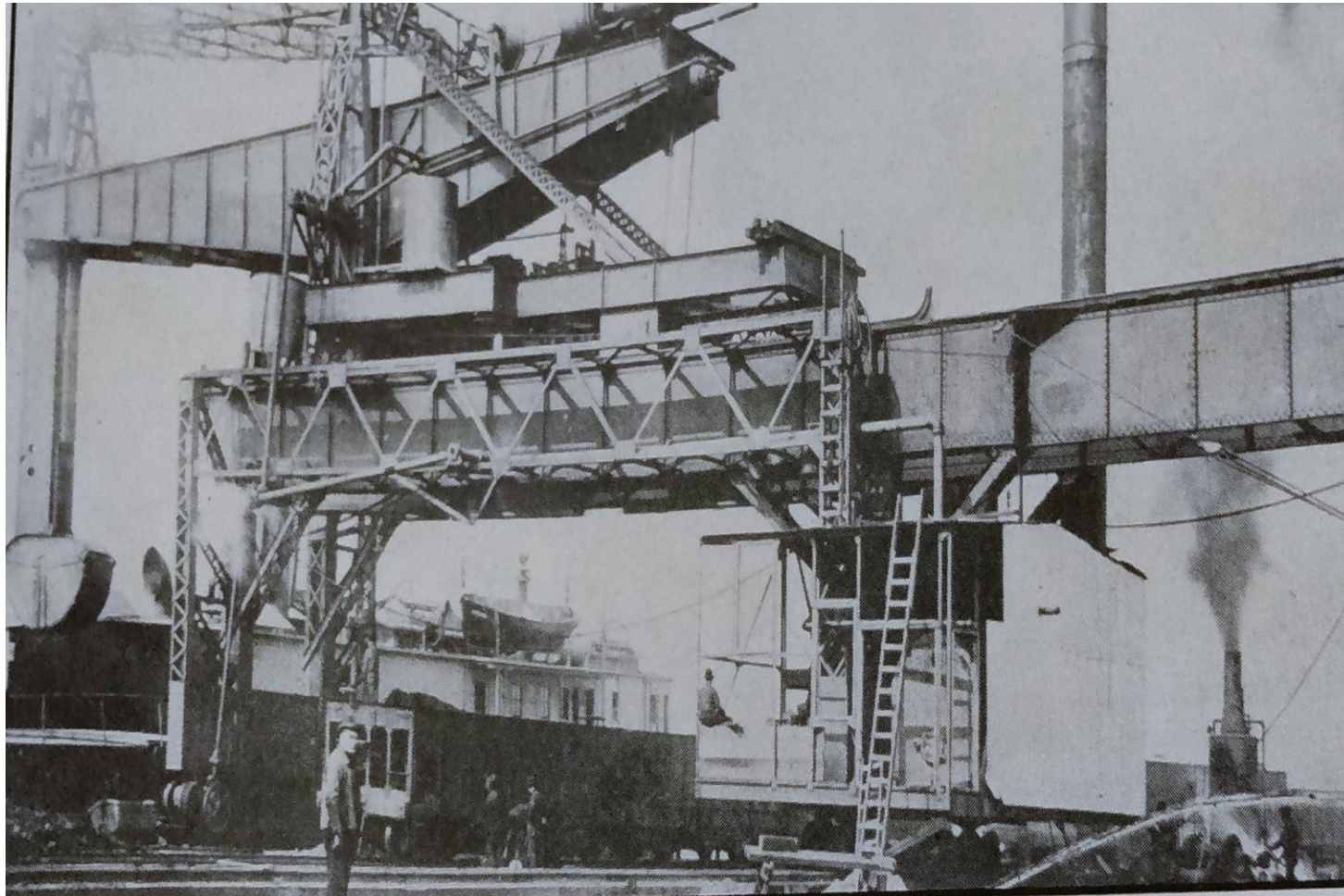


P & C Portraits



Pittsburgh & Conneaut
Dock Company Booklet
1973 Emil Bartone
Collection



The original Hulett

Duff Brace
Scrapbook

Pittsburgh & Conneaut
Dock Booklet, 1973
Emil Bartone Collection



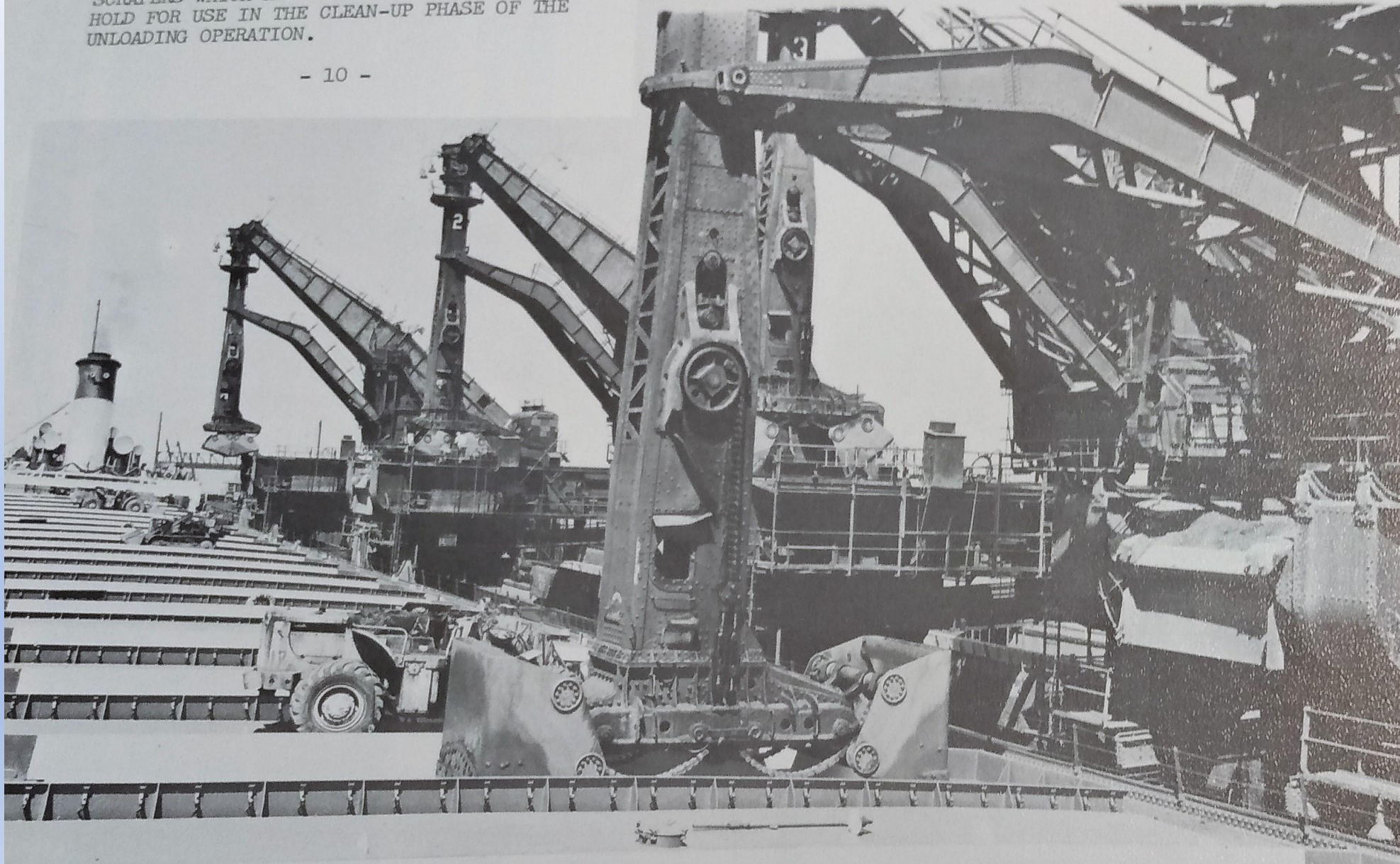
RE-LIMESTONE LOADOUT STATION, CAPABLE OF LOADING 400 100-TON CARS EVERY 12 HOURS. CARS MOVE BY RADIO-CONTROLLED LOCOMOTIVES AND LOADOUT CONTROLLED BY MINI-COMPUTER.



ORE DOCK VIEW WITH HULETT UNLOADERS TRANSFERRING IRON ORE PELLETS FROM LAKE FREIGHTER ONTO DOCK FRONT CONVEYOR BELT TO GROUND STORAGE. RATED CAPACITY OF FIVE UNLOADERS EXCESS OF 5,000 TONS PER HOUR

A VIEW OF THE ELECTRIC HULETT UNLOADERS
TAKEN FROM ABOARD AN ORE BOAT. RUBBER-
TIRED VEHICLES SHOWN ON THE DECK ARE
SCRAPERS WHICH ARE LOWERED INTO THE VESSEL
HOLD FOR USE IN THE CLEAN-UP PHASE OF THE
UNLOADING OPERATION.

- 10 -



Pittsburgh
& Conneaut
Dock
Booklet,
1973
Emil
Bartone
Collection



Pittsburgh & Conneaut
Company Dock
(Emil Bartone
Collection)



Marking the days of Conneaut Harbor around the turn of the century is the scene of what is now a busy section of the Pittsburgh & Conneaut Dock. Old timers report it is when what is now Dock Four was constructed. In the back ground is a long line of coal and ore cars. (Duff Brace scrapbook.)



Pittsburgh & Conneaut Dock building, 1908. This photograph by Floyd Johnson from the August 1977 Dock Talk “is a view of the building when the Dock Company was just a teenager, sixteen years of age to be exact. The year was 1908 and Floyd snapped this view of the powerhouse on Dock 3. The electric shop at that time was in the northeast corner of the building. Behind the building on Dock 3 can be seen part of the framework of the car dumper. In front of the car dumper and to the right of the building at Dock 3 is a building waiting for a load of coal. Across the slip and on the hill can be seen the main office building. On the building’s left is a string of coal cars on the approach tracks to the coal dumper. Just beyond that are the boats used to transport fuel and supplies to the cargo vessels. Across the slip is seen part of a vessel at Dock 2 and the dockside unloading equipment.”



**This 1908 postcard shows the then thriving Pittsburgh and
Conneaut Dock Company, complete with hulets and rail cars.**

Emil Bartone
Collection

THE NEWS-HERALD, MONDAY, APRIL 9, 1956

Conneaut Album



AS IN THE early days of the Pittsburgh & Conneaut Dock Co., 1908 to be exact, that this group of men took time off from their duties to pose for the cameraman. Left to right are Charles Kane, shop foreman; James Tobin, fast plant foreman; P. J. Fickinger, master mechanic; Sherman, electrical engineer; Joseph Close, roustabout foreman, and Peter J. Henesey, store room. All are now deceased. This picture is from the collection of Leo E. Cunningham, 436 State St. was employed at the P & C Dock Co. during this period.



During the Pittsburgh & Conneaut Dock's first open house on July 28, 1951, The personnel of the machine shop gathered to make this portrait. Two people who are partially hidden are listed as unidentified. The Machine Shop members are left to right: Jake Koelliker, foreman; Pat Nimelli; unknown; Charles Hawley; Guy Vorse; Paul Hawley; Leon Webster; Bill Lyon; Francis Bryant; Unknown; Winfred Golden; Ray Smith; Herb S. Hopkins; Harold Beckwith; Bert Denkelberg; Clarence Bricker; and Bill Ahlberg.



HUGE BULK of the super ore carrier Roger Blough as she lies at the unloading dock in Conneaut dwarfs the Canada Steamship Line coal boat Hocheloga headed out of port. The 858-foot self-unloading motor

vessel made its initial trip to Conneaut with a 4000-ton cargo Tuesday. The photo was taken by atop one of the Hulett machines at the harbor.

Duff Brace
Scrapbook
Conneaut
News Herald
September
1970



AERIAL VIEW OF P. & C. DOCK COMPANY WITH NEW MATERIALS HANDLING AND STORAGE SYSTEM IN CENTER (STORAGE CAPACITY 3,200,000 TONS). COAL-LOADING DOCK AT RIGHT CENTER.

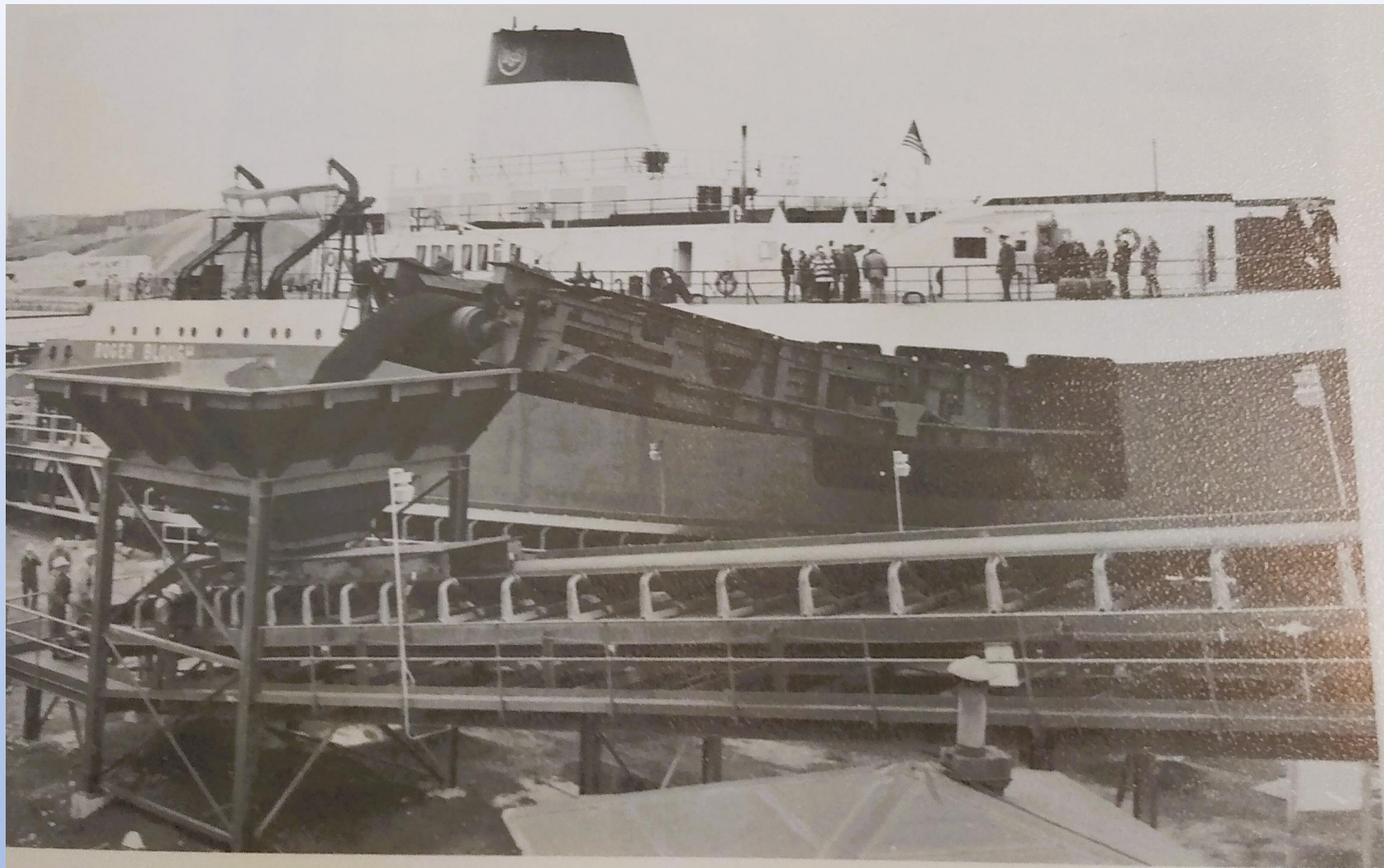
Pittsburgh and
Conneaut
Booklet, 1973

AERIAL VIEW OF P. & C. DOCK COMPANY WITH NEW
MATERIALS HANDLING AND STORAGE SYSTEM IN CENTER
(STORAGE CAPACITY 3,200,000 TONS). COAL-LOADING
DOCK AT RIGHT CENTER.

-8-

Pittsburgh &
Conneaut Booklet,
1973.
Emil Bartone
Collection





Pittsburgh &
Conneaut
Booklet, 1973

F-UNLOADER M/V ROGER BLOUGH DISCHARGING ITS CARGO OF 40,000 TONS OF IRON
PELLETS INTO DOCKSIDE RECEIVING HOPPER FOR MOVEMENT BY CONVEYOR TO THE
JND STORAGE. UNLOADING RATE IS 10,000 TONS PER HOUR.



Dock Talk, July 1976



Governor Rhodes visits the P & C. Dock.

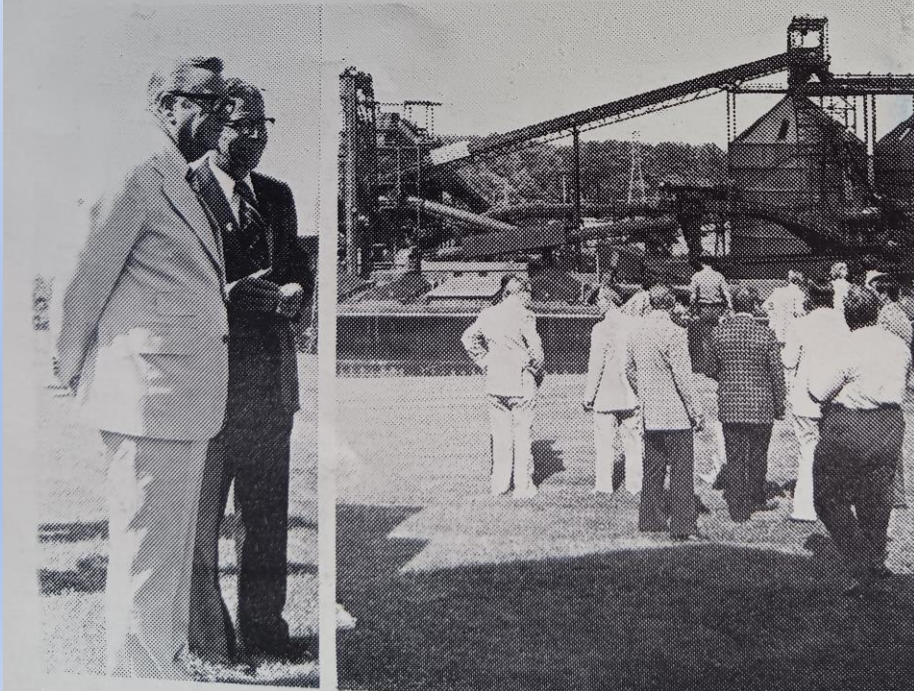
Following a meeting on June 29th with officials of Conneaut and Ashtabula County, Ohio's Governor James A. Rhodes and other state dignitaries viewed the various activities of the Pittsburgh & Conneaut Dock Company at the Port of Conneaut.

The Dock Company's President and General Manager, Charles H. McGuirk, welcomes Ohio's Governor James A. Rhodes, State Senator David Johnson, and Conneaut's Mayor Paul Williams as they were about to begin the tour.

Introduction to the various activities of the Company were made by Mr. McGuirk in the scale model room. Then the entourage moved to the terrace east of the building for a general view of the operations.

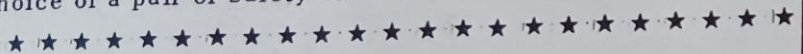
The Governor's visit to our community was in the afternoon, following stops in Youngstown and Warren. It was described as a "goodwill gesture" and designed to give encouragement to the Conneaut Harbor Revitalization Committee and pledge of state aid to officials who are seeking industrial expansion in the area.

The photos used with this article were produced by the Conneaut News Herald. (Dock Talk, July 1976)





June was the sixth consecutive month without a Lost-Time Injury. If all employees are on their guard and practice safety we can make July the seventh continuing month of safety perfection and another employee will be given his choice of a pair of safety shoes.



- Safety Slogan for July, 1976 -

Safety - - The Spirit of '76!



WHO'S WHO for JULY

During the Pittsburgh & Conneaut Dock Company's first Open House on July 28, 1951, the personnel of the Machine Shop gathered to make this portrait. Twenty-five years later we present it to you as our Who's Who picture for July, 1976.

Two persons, who are partially hidden, are listed as unidentified. Perhaps someone is familiar enough with the machine shop crew of a quarter of a century ago that they can fill us in on their names. The machine shop members are, left to right: Jake Koelliker, foreman; Pat Nimelli; Unknown; Charles Hawley; Guy Vorse; Paul Hawley; Leon Webster; Bill Lyon; Francis Bryant; Unknown; Winfred Golden; Ray Smith; Herb S. Hopkins; Harold Beckwith; Bert Denkelberg; Clarence Bricker; and Bill Ahlberg.

Again we are indebted to Bill Ahlberg for loaning us another snapshot from his collection for use in our Who's Who.



Lillian Kasto's father, Andrew Kasto. Who worked on the P&C Docks for 41 years.

IN MEMORIAM

ANDREW KASTO

Andrew Kasto, 71, of 886 Center Rd., Conneaut, was pronounced dead on arrival at Brown Memorial Hospital on January 3, 1978. Death was due to a heart attack.

Mr. Kasto was born in Conneaut September 21, 1906, and had resided here his entire life. He was employed at the Dock Company on May 14, 1923, and retired as a coal dock foreman on August 31, 1964 after more than 41 years' service. Mr. Kasto is shown in 1964

as he received his retirement congratulations from Keith Stevens, president of the Dock Company.

Mr. Kasto was a member of the Evergreen Lodge No. 222, F.&A.M., of Conneaut. He is survived by his wife, Helen; four daughters, Mrs. Joan Huntley, of Erie, Pa., Mrs. Sally Hale, of Newbury Park, Cal., Barbara Kasto, of Moorpark, Cal., Lillian Kasto, at home; and three grandchildren.

Funeral services were held January 6, 1978 at the Marcy Funeral Home with the Rev. Roger Hogle, pastor of the South Ridge Baptist Church, officiating. Interment was in the East Conneaut Cemetery.



Bartone Brothers and Rhodes March During Veterans' Day Snow Storm



Huddled under the awning waiting for the 1977 Veteran's Day parade to start are left to right, Victor Gable, Emil Bartone, Otis Osborne, Robert "Dusty" Rhodes, Fred Bartone, and Pat Wojtowicz. These members of the American Legion Cowles Post 151 formed the honor guard during the procession which also included members of the Conneaut High School Band. The marcher's braved cold winds and the season's first snowfall to honor our nation's veterans who have made the supreme sacrifice. Emil Bartone and Dusty Rhodes are employees of the Dock

